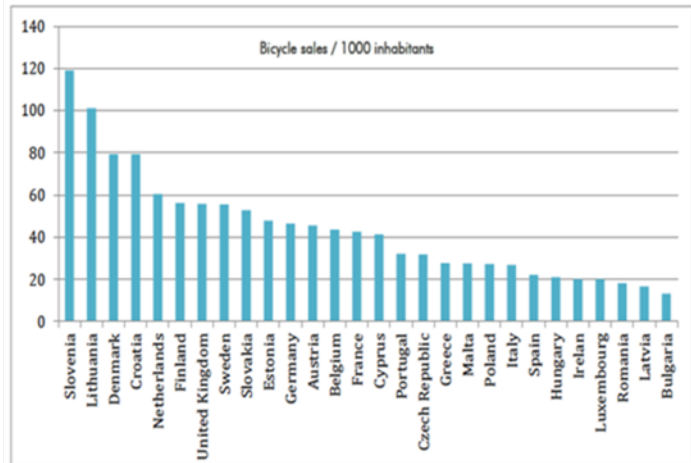
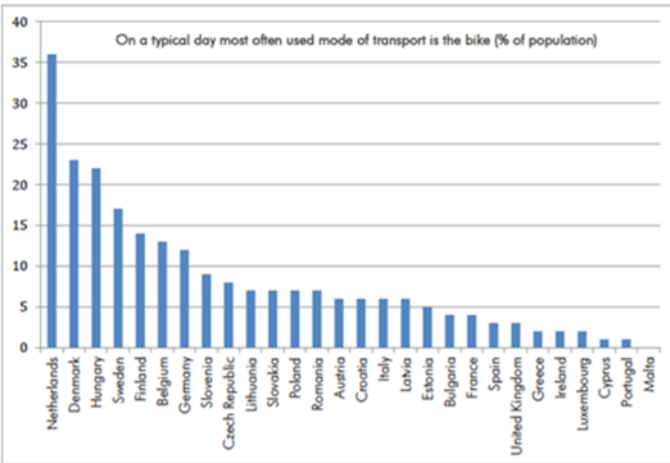


FACT SHEETS ON BICYCLE SAFETY

BICYCLE USE

BICYCLE MARKET

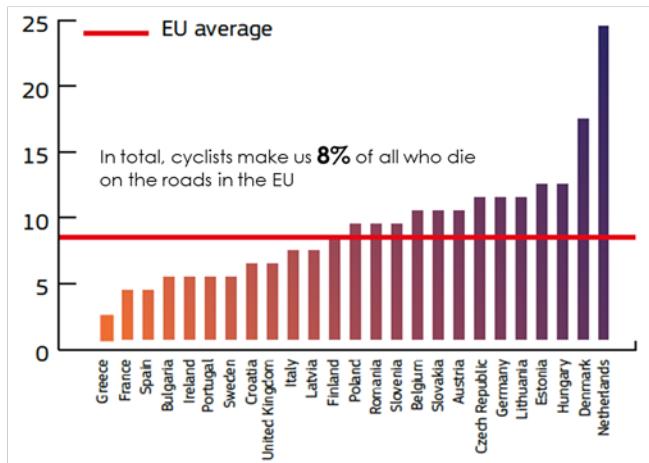
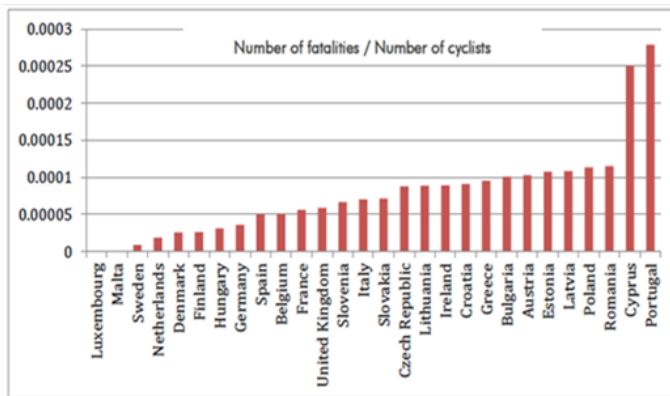


Source: European Cycling Federation, EFC (2015). Cycling Barometer 2015. Technical Document, Brussels.

Source: European Cycling Federation, EFC (2015). Cycling Barometer 2015. Technical Document, Brussels.

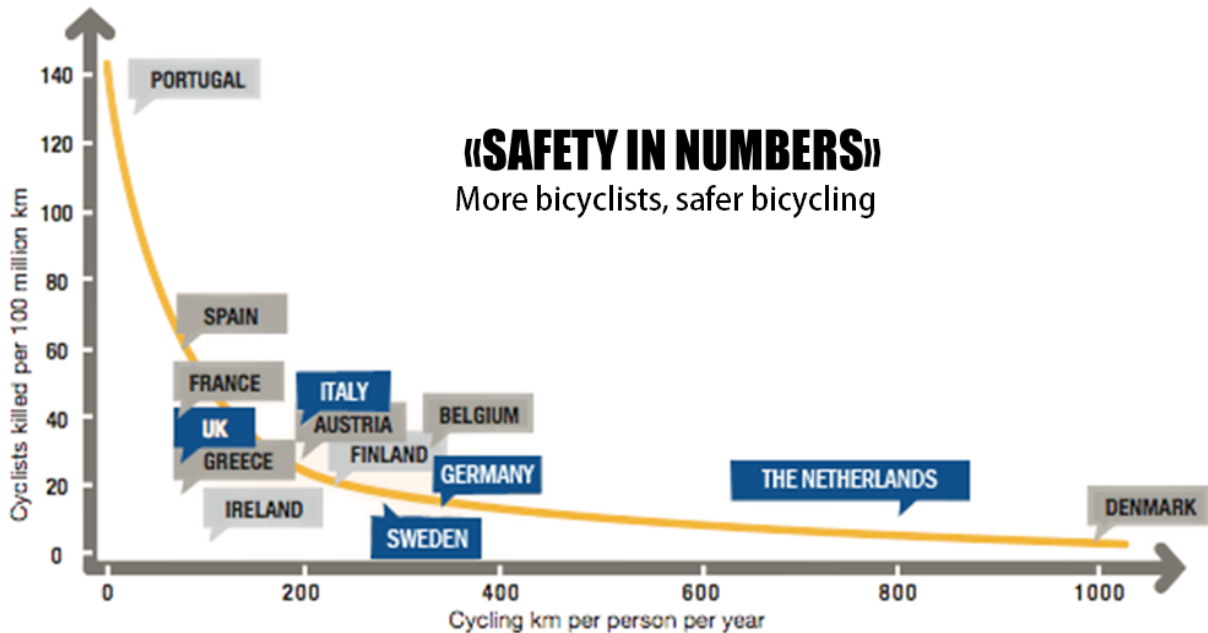
FATALITIES/CYCLISTS

CYCLIST FATALITIES

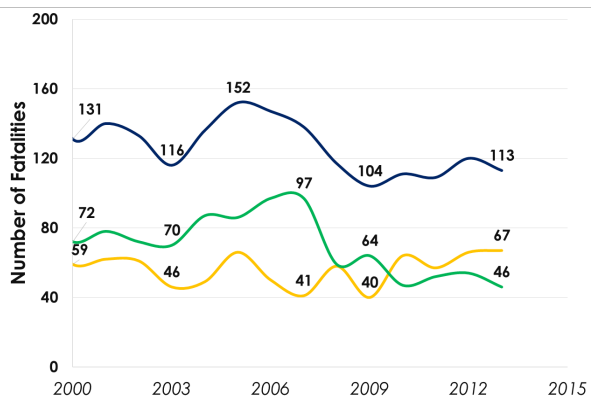


Source: European Cycling Federation, EFC (2015). Cycling Barometer 2015. Technical Document, Brussels.

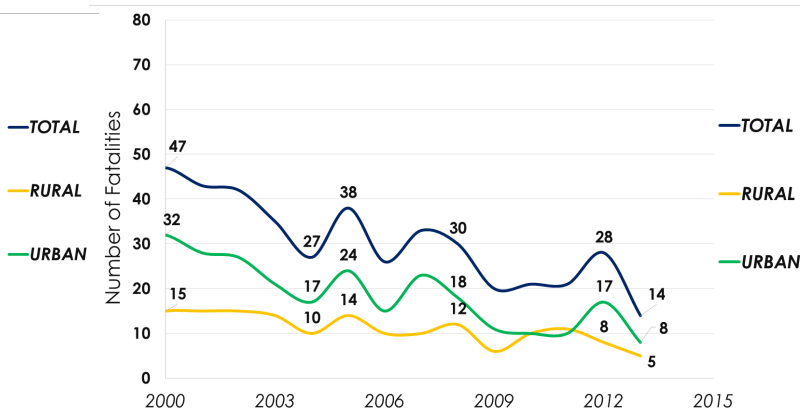
Source: European Commission (2015): Road Safety in the European Union. Trends, statistics and main challenges. European Commission, Mobility and Transport, Brussels



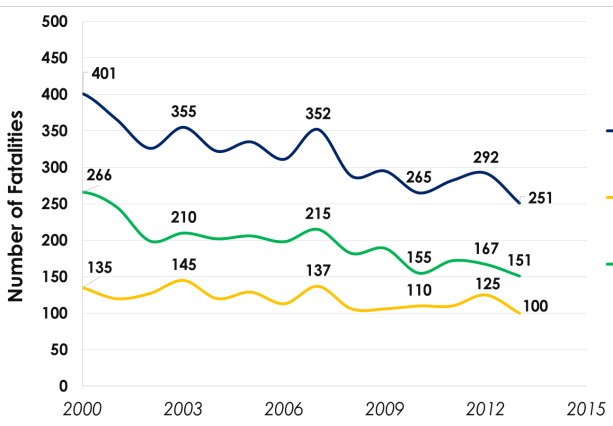
CYCLIST FATALITIES IN UK



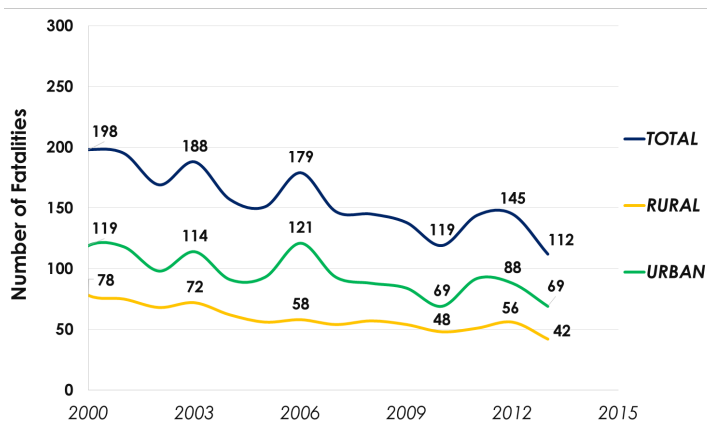
CYCLIST FATALITIES IN SWEDEN



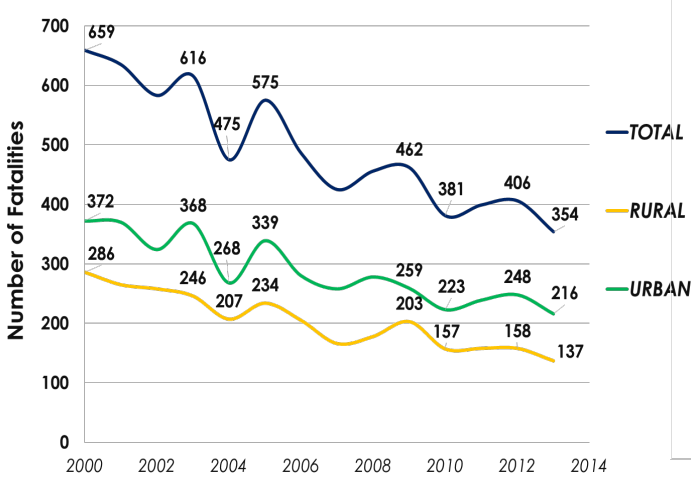
CYCLIST FATALITIES IN ITALY



CYCLIST FATALITIES IN THE NETHERLANDS



CYCLIST FATALITIES IN GERMANY



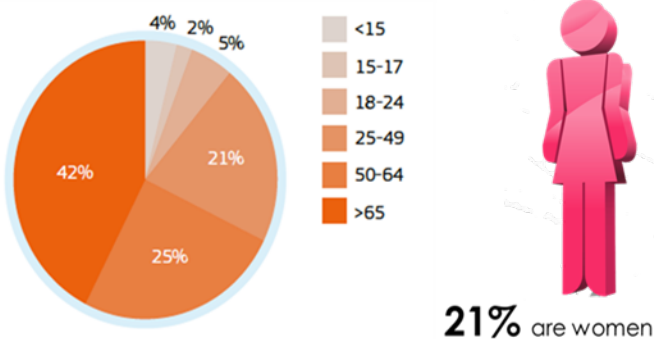
DECLINE IN CYCLIST FATALITIES

	2000-2013	2010-2013
	-13,7%	+1,8%
	-70,2%	-33,3%
	-37,4%	-5,3%
	-43,4%	-5,9%
	-46,3%	-7,0%



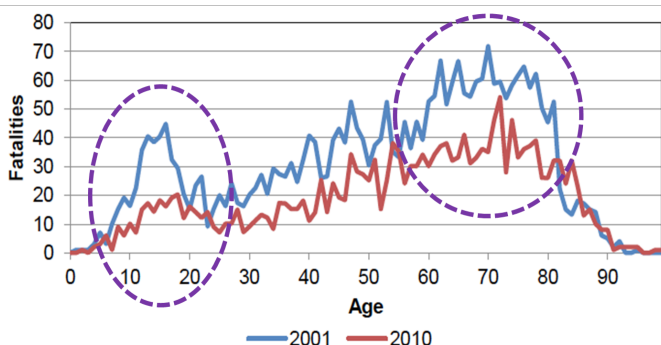
The number of cyclist fatalities has decreased by only 3% which is much lower than the total fatality decrease of 18% from 2010 to 2013. One possible reason for the slow reduction of the number of cyclist victims is that the total number of cyclists goes up in the EU as more people turn to more sustainable and healthy transport modes.

CYCLIST FATALITIES: AGE AND GENDER



Source: European Commission (2015). Road Safety in the European Union. Trends, statistics and main challenge. European Commission, Mobility and Transport, Brussels.

CYCLIST FATALITIES BY AGE

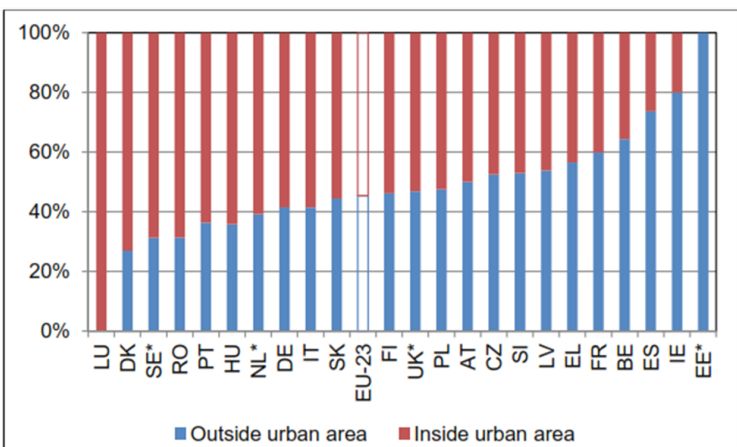


Data of 2009 for NL, NI and SE

Source: CARE Database / EC
Date of query: October 2012

CYCLIST FATALITIES BY AREA TYPE (EU-23)

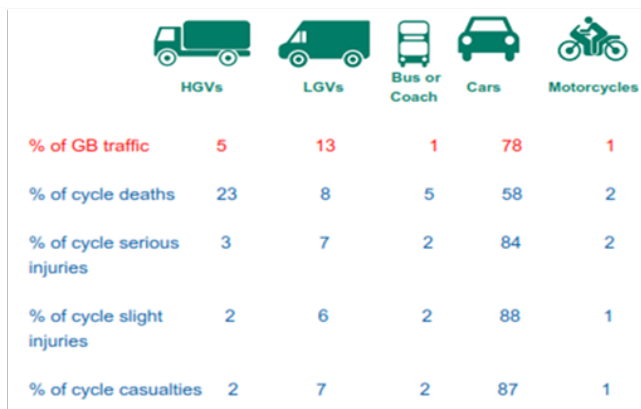
57% are killed in urban areas



* Data of 2009 for EE, NI, NL and SE

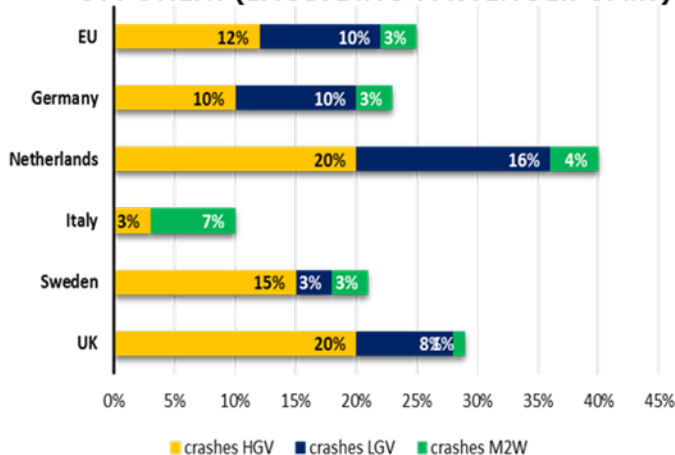
Source: CARE Database / EC

PROPORTION OF TRAFFIC IN GB AND PROPORTION OF CYCLISTS FATALITIES AND NON-FATAL INJURIES WHICH THOSE VEHICLES WERE INVOLVED IN

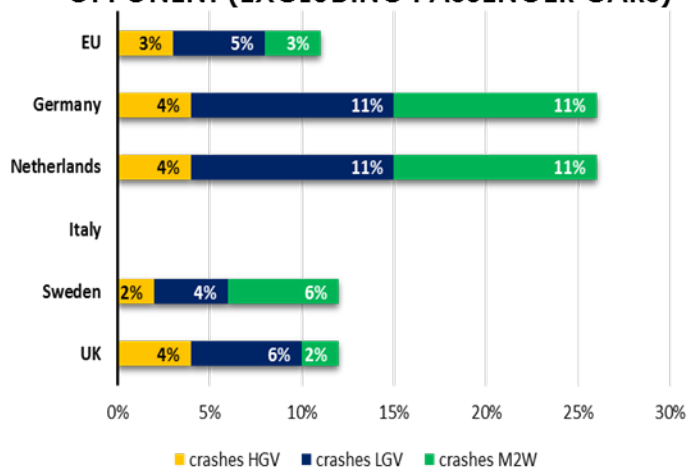


Source: Department for Transport (2014). Reported Road Casualties Great Britain: 2013 Annual Report, focus on pedal cyclists. DfT, London.

FATAL BICYCLE CRASH VICTIMS BY CRASH OPPONENT (EXCLUDING PASSENGER CARS)



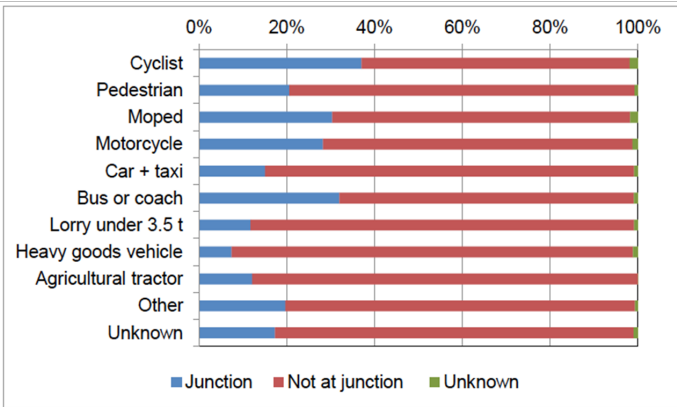
INJURY BICYCLE CRASH VICTIMS BY CRASH OPPONENT (EXCLUDING PASSENGER CARS)



Source: OECD/International Transport Forum (2013), *Cycling, Health and Safety*, OECD Publishing/ITF.

Source: OECD/International Transport Forum (2013), *Cycling, Health and Safety*, OECD Publishing/ITF.

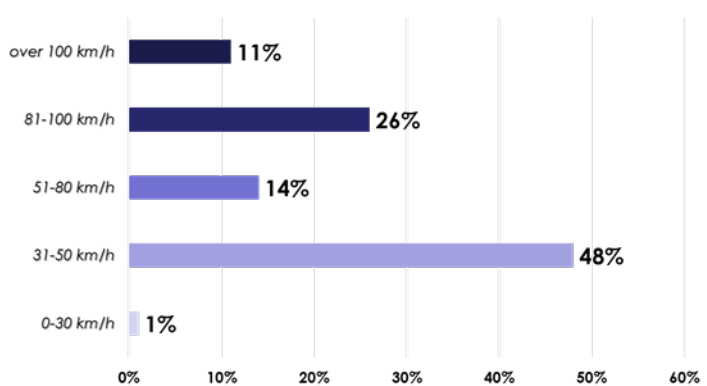
CYCLIST FATALITIES AT JUNCTION COMPARED TO OTHER MODES OF TRANSPORT (EU-23)



* Data of 2009 for EE, NL, SE and NI
Source: CARE Database / EC
Date of query: October 2012

FATAL BICYCLE CRASHES ACCORDING TO THE SPEED LIMIT OF THE MAIN ROAD

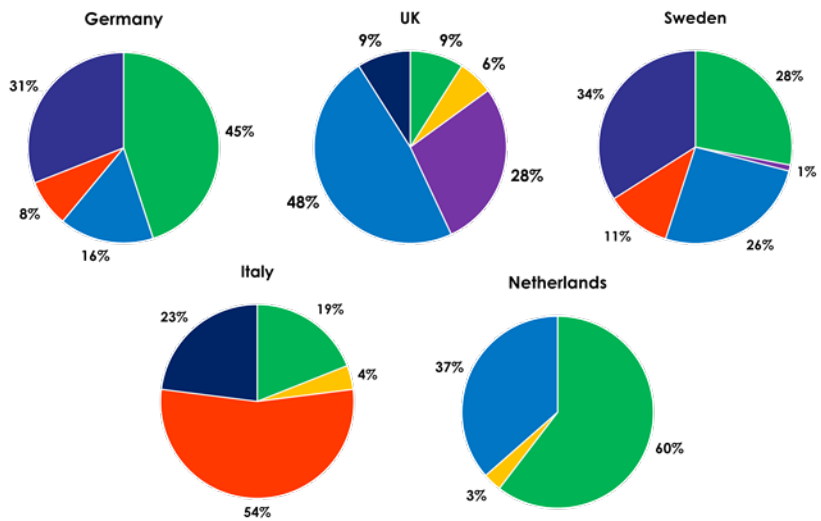
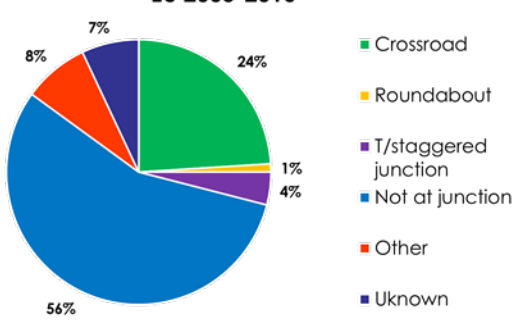
EU 2005-2010 and USA 2005-2009



Source: OECD/International Transport Forum (2013). *Cycling, Health and Safety*, OECD Publishing/ITF.

FATAL BICYCLE CRASHES AT DIFFERENT JUNCTION

EU 2005-2010



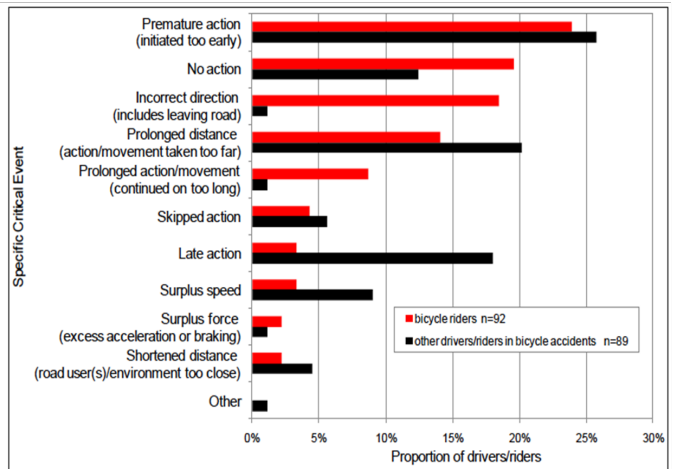
Source: OECD/International Transport Forum (2013). *Cycling, Health and Safety*, OECD Publishing/ITF.

CONTRIBUTORY FACTORS IN BICYCLE ACCIDENTS (UK)

Contributory Factor	Pedal Cycle		Other Vehicles		All Vehicles	
	Number	%	Number	%	Number	%
No CF recorded	6523	50	3404	27	9961	39
Failed to look properly	3046	23	6291	50	9375	37
Failed to judge other person's path or speed	1369	10	2066	17	3447	13
Careless, reckless or in a hurry	1038	8	1560	13	2605	10
Poor turn or manoeuvre	746	6	1632	13	2392	9
Cyclist entering road from pavement	880	7	23	0.2	905	4
Passing too close to cyclist, horse rider or pedestrian	54	0.4	1203	10	1278	5
Stationary or parked vehicle(s)	310	2	499	4	810	3
Loss of control	689	5	86	1	776	3
Disobeyed «Give Way» or «Stop» sign or markings	167	1	515	4	688	3
TOTAL NUMBER OF VEHICLES	13078	100	12476	100	25633	100

Source: Department for Transport (2014). Reported Road Casualties Great Britain: 2013 Annual Report, focus on pedal cyclists. DfT, London.

CRITICAL EVENTS: BICYCLE RIDERS AND OTHER DRIVERS/RIDERS IN BICYCLE ACCIDENT



Source: SafetyNet Accident Causation Database 2005 to 2008 / EC
Date of query: 2010